

# *XLfit 5.5*

---

## UNINSTALL GUIDE

## **XLfit Uninstall Guide**

Information in this document is subject to change without notice. The software described in this document is furnished under a license agreement or nondisclosure agreement.

The software may be used or copied only in accordance with the terms of those agreements.

All rights reserved. No part of this publication may be reproduced, stored in a retrieval system, or transmitted in any form or any means electronic or mechanical, including photocopying and recording for any purpose other than the purchaser's personal use without the written permission of IDBS.

The names of actual companies and products mentioned in this document may be trademarks of their respective owners.

IDBS accepts no responsibility or liability for any errors or inaccuracies that may appear in this documentation.

Copyright © 2016 IDBS

18 May 2016

# XLfit Uninstall Guide

## Contents

<b>Introduction.....</b>	<b>4</b>
<b>Pre-requisite Tasks.....</b>	<b>4</b>
<b>Uninstalling XLfit.....</b>	<b>4</b>
<b>Uninstalling XLfit on Windows 7.....</b>	<b>4</b>
<b>Uninstalling XLfit on Windows 8.....</b>	<b>6</b>
<b>Uninstalling XLfit on Windows 10.....</b>	<b>8</b>

# Introduction

This document contains information related to uninstalling *XLfit*. It does not cover uninstalling the following components used by *XLfit*:

- Microsoft Excel
- Microsoft .Net Framework

If you have any problems whilst uninstalling, or have any feedback or comments, either:

- [Email](#) your local support office.
- Refer to the [IDBS Customer Support Portal](#).

**Note:** If you are upgrading *XLfit* from an earlier version, the older version is automatically uninstalled as part of the upgrade.

## Pre-requisite Tasks

You must close:

- Microsoft Excel
- Microsoft Office applications containing embedded Excel files.

It is advisable to close:

- All other applications

## Uninstalling *XLfit*

The process of uninstalling *XLfit* differs slightly depending on the version of the Windows operating system you are using. For completeness, this guide covers:

- Windows 7
- Windows 8
- Windows 10

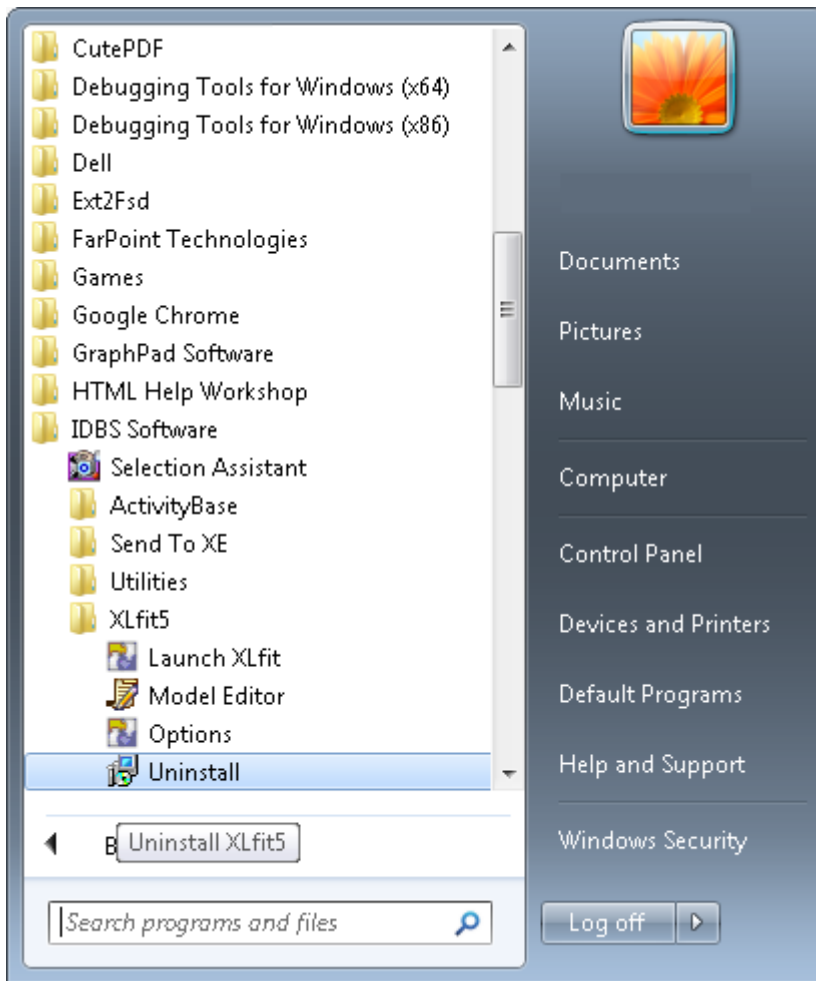
## Uninstalling *XLfit* on Windows 7

Windows 7 has an IDBS *XLfit5* uninstall program. This is available by:

1. Clicking the **Start Button**.
2. Click **All Programs**.

## XLfit Uninstall Guide

3. Navigate to the IDBS Software > XLfit5 group.

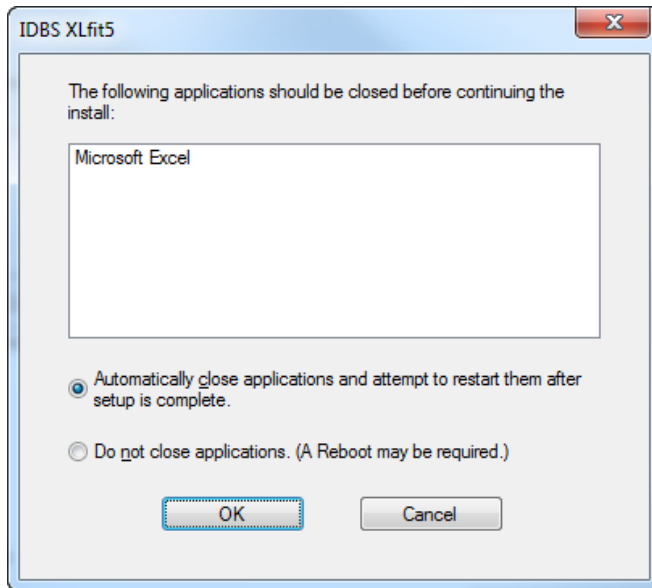


Alternatively, follow the process below.

### To uninstall XLfit on Windows 7:

1. Click the **Windows Start Button**.
2. Search for **Uninstall**.
3. Select **Uninstall a Program** in the Control Panel category. The list of installed programs is displayed.
4. Select **IDBS XLfit5** in the list.
5. Click **Uninstall**. The uninstaller starts.
6. If you have Microsoft Excel open (or a Microsoft Office application open with an embedded Excel file) a dialog is displayed informing you it must be closed.

## XLfit Uninstall Guide



7. Select either:

- **Automatically Close Applications and Attempt to Restart them after Setup is Complete.**
- Or, **Do not Close Applications.**

**Note:** IDBS recommends the first option is selected. If you have unsaved changes in an open spreadsheet, manually save them before continuing.

8. Click **OK** to continue the uninstall.

9. When XLfit is uninstalled successfully, the uninstall wizard closes automatically.

## Uninstalling XLfit on Windows 8

Windows 8 has an IDBS XLfit5 uninstall program. This is available by:

1. Right clicking on the **IDBS XLfit5** program tile.
2. Clicking **Uninstall**.

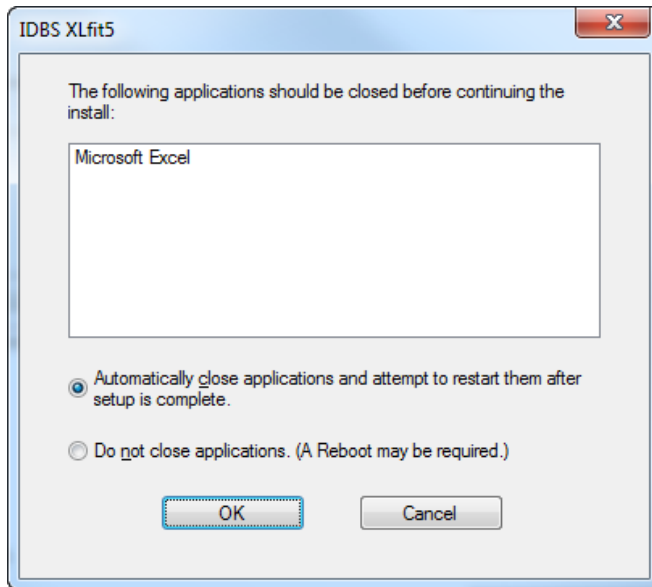
Alternatively, follow the process below.

### To uninstall XLfit on Windows 8:

1. Open the Charm Bar.
2. Click **Search**.
3. Search for **Uninstall**.

## XLfit Uninstall Guide

4. Select **Uninstall a Program** in the Control Panel category. The list of installed programs is displayed.
5. Select **IDBS XLfit5** in the list.
6. Click **Uninstall**. The uninstaller starts.
7. If you have Microsoft Excel open (or a Microsoft Office application open with an embedded Excel file) a dialog is displayed informing you it must be closed.



8. Select either:
  - **Automatically Close Applications and Attempt to Restart them after Setup is Complete.**
  - Or, **Do not Close Applications.**

**Note:** IDBS recommends that the first option is selected. If you have unsaved changes in an open spreadsheet, manually save them before continuing.

9. Click **OK** to continue the uninstall.
10. When XLfit is uninstalled successfully, the uninstall wizard closes automatically.

# Uninstalling XLfit on Windows 10

### To uninstall XLfit on Windows 10:

1. Close Microsoft Excel, and/or any Microsoft Office applications open with embedded Excel files.
2. Using Windows Explorer, navigate to the folder where XLfit is installed.
3. Click **Uninstall**.
4. Click **Yes** to confirm that you want to uninstall the product. The uninstaller starts.
5. When XLfit is uninstalled successfully, the uninstall wizard closes automatically.